

Draft (c) Pragmasis Ltd

Alvecote Wood 2012



Winter Frost on Oak Trees at Alvecote Wood

Winter is a time of sleep and renewal in the woods, and a time of great beauty too. Snow on the ground allows us to see the tracks of foxes, deer and other mammals, giving us an insight into their activities.

January 2012

Monday	Tuesday	Wednesday	Thursday	Friday	Saturday	Sunday
						1
Bank Holiday 2	3	4	5	6	7	8
9	10	11	12	13	14	15
16	17	18	19	20	21	22
23	24	25	26	27	28	29
30	31					

Alvecote Wood

Alvecote Wood is 20 acres of ancient and newly-planted woodland near Tamworth that is being developed as a site for wildlife and for use by community groups. It consists of 11 acres of ancient woodland and a new 9 acre site, Betty's Wood. The whole site contains ponds, meadows, hedgerows and other wildlife habitats. This calendar has been produced to help support our work. For more information, please see www.alvecotewood.co.uk. Photography by Sarah Walters (c) Pragmasis Ltd.





Blue Tit at Alvecote Wood



Winter is a busy time at Alvecote Wood. Coppicing, hedge maintenance, scrub clearance and tree planting all reach their peak in February as the work needs to be done before the onset of Spring. The blue tits are some of the first birds to start looking for nest sites, often in one of the 31 nest boxes we have on site

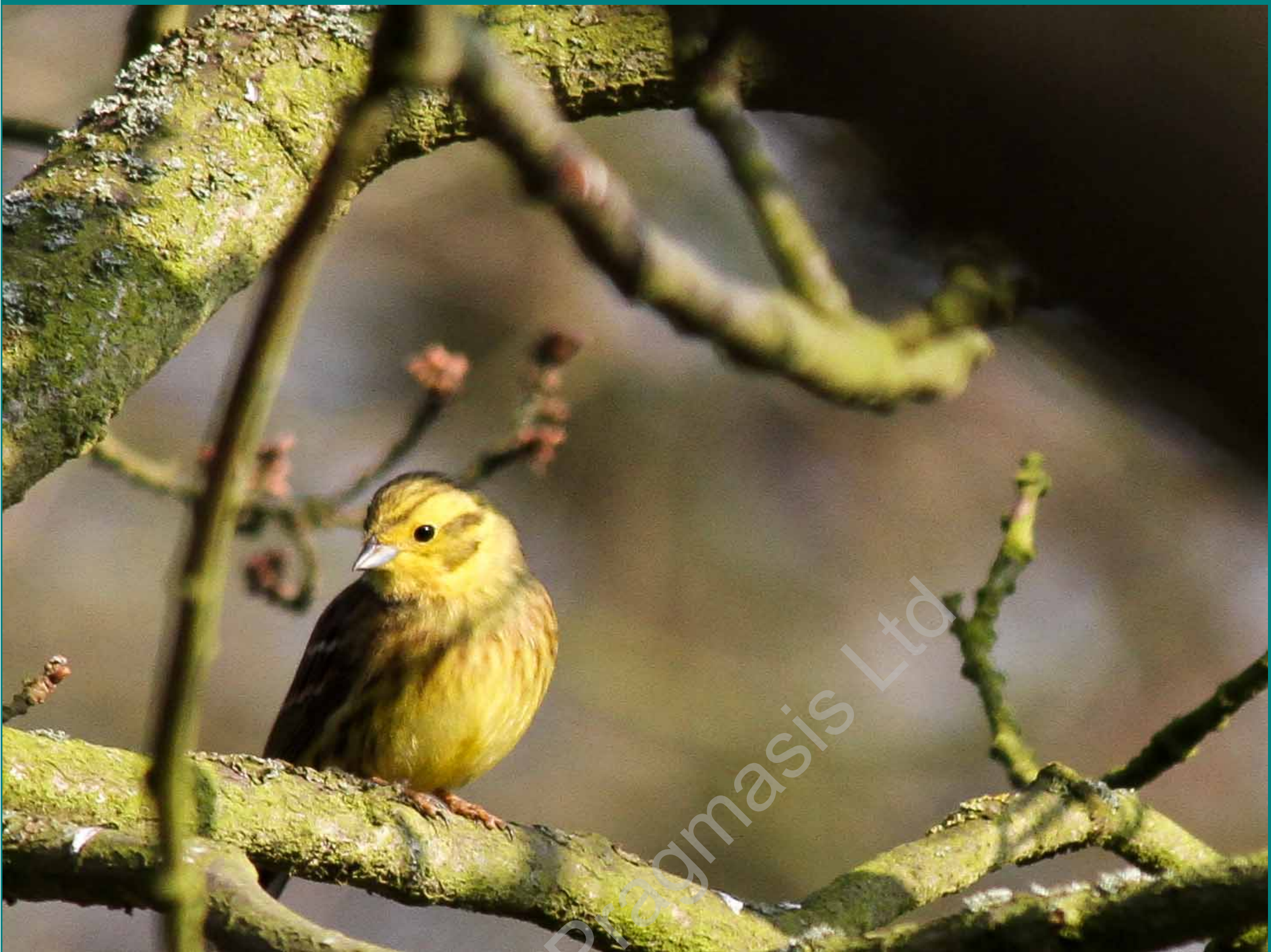
February 2012

Monday	Tuesday	Wednesday	Thursday	Friday	Saturday	Sunday
		1	2	3	4	5
6	7	8	9	10	11	12
13	14	15	16	17	18	19
20	21	22	23	24	25	26
27	28	29				

Alvecote Wood

Alvecote Wood is 20 acres of ancient and newly-planted woodland near Tamworth that is being developed as a site for wildlife and for use by community groups. It consists of 11 acres of ancient woodland and a new 9 acre site, Betty's Wood. The whole site contains ponds, meadows, hedgerows and other wildlife habitats. This calendar has been produced to help support our work. For more information, please see www.alvecotewood.co.uk. Photography by Sarah Walters (c) Pragmasis Ltd.





Yellowhammer at Alvecote Wood

The number of bird species visiting Alvecote Wood is increasing every year. The yellowhammer is a bird that has been declining in the UK, and is now red-listed, but we have had two pairs nesting. Other red-listed species seen in the woods are the lesser-spotted woodpecker and willow tit.

March 2012

Monday	Tuesday	Wednesday	Thursday	Friday	Saturday	Sunday
			1	2	3	4
5	6	7	8	9	10	11
12	13	14	15	16	17	18
19	20	21	22	23	24	25
26	27	28	29	30	31	

Alvecote Wood

Alvecote Wood is 20 acres of ancient and newly-planted woodland near Tamworth that is being developed as a site for wildlife and for use by community groups. It consists of 11 acres of ancient woodland and a new 9 acre site, Betty's Wood. The whole site contains ponds, meadows, hedgerows and other wildlife habitats. This calendar has been produced to help support our work. For more information, please see www.alvecotewood.co.uk. Photography by Sarah Walters (c) Pragmasis Ltd.





Nuthatch at Alvecote Wood

Oak woodland is ideal habitat for the nuthatch with its habit of perching head-down, as pictured here.

April 2012

Monday	Tuesday	Wednesday	Thursday	Friday	Saturday	Sunday
						1
2	3	4	5	Good Friday 6	7	8
Easter Monday 9	10	11	12	13	14	15
16	17	18	19	20	21	22
23	24	25	26	27	28	29
30						

Alvecote Wood

Alvecote Wood is 20 acres of ancient and newly-planted woodland near Tamworth that is being developed as a site for wildlife and for use by community groups. It consists of 11 acres of ancient woodland and a new 9 acre site, Betty's Wood. The whole site contains ponds, meadows, hedgerows and other wildlife habitats. This calendar has been produced to help support our work. For more information, please see www.alvecotewood.co.uk. Photography by Sarah Walters (c) Pragmasis Ltd.





Common Blue Butterfly in Betty's Wood

A little jewel in the grass, the common blue butterfly has been quick to colonise the meadows at Betty's Wood, along with its close cousin, the Brown Argus butterfly. Birdsfoot trefoil is helping to attract blue butterflies to our site.

May 2012

Monday	Tuesday	Wednesday	Thursday	Friday	Saturday	Sunday
	1	2	3	4	5	6
Bank Holiday 7	8	9	10	11	12	13
14	15	16	17	18	19	20
21	22	23	24	25	26	27
28	29	30	31			

Alvecote Wood

Alvecote Wood is 20 acres of ancient and newly-planted woodland near Tamworth that is being developed as a site for wildlife and for use by community groups. It consists of 11 acres of ancient woodland and a new 9 acre site, Betty's Wood. The whole site contains ponds, meadows, hedgerows and other wildlife habitats. This calendar has been produced to help support our work. For more information, please see www.alvecotewood.co.uk. Photography by Sarah Walters (c) Pragmasis Ltd.





Banded Demoiselle at Alvecote Wood

The banded demoiselle is one of a number of damselfly and dragonfly species attracted to Alvecote Wood. We are attracting damselflies and dragonflies through the provision of ponds - six in Alvecote Wood and five in Betty's Wood. June also brings a fine display of poppies in Betty's Wood meadow.

June 2012

Monday	Tuesday	Wednesday	Thursday	Friday	Saturday	Sunday
				1	2	3
Bank Holiday 4	Jubilee Holiday 5	6	7	8	9	10
11	12	13	14	15	16	17
18	19	20	21	22	23	24
25	26	27	28	29	30	

Alvecote Wood

Alvecote Wood is 20 acres of ancient and newly-planted woodland near Tamworth that is being developed as a site for wildlife and for use by community groups. It consists of 11 acres of ancient woodland and a new 9 acre site, Betty's Wood. The whole site contains ponds, meadows, hedgerows and other wildlife habitats. This calendar has been produced to help support our work. For more information, please see www.alvecotewood.co.uk. Photography by Sarah Walters (c) Pragmasis Ltd.





Brown Argus in Betty's Wood Meadow

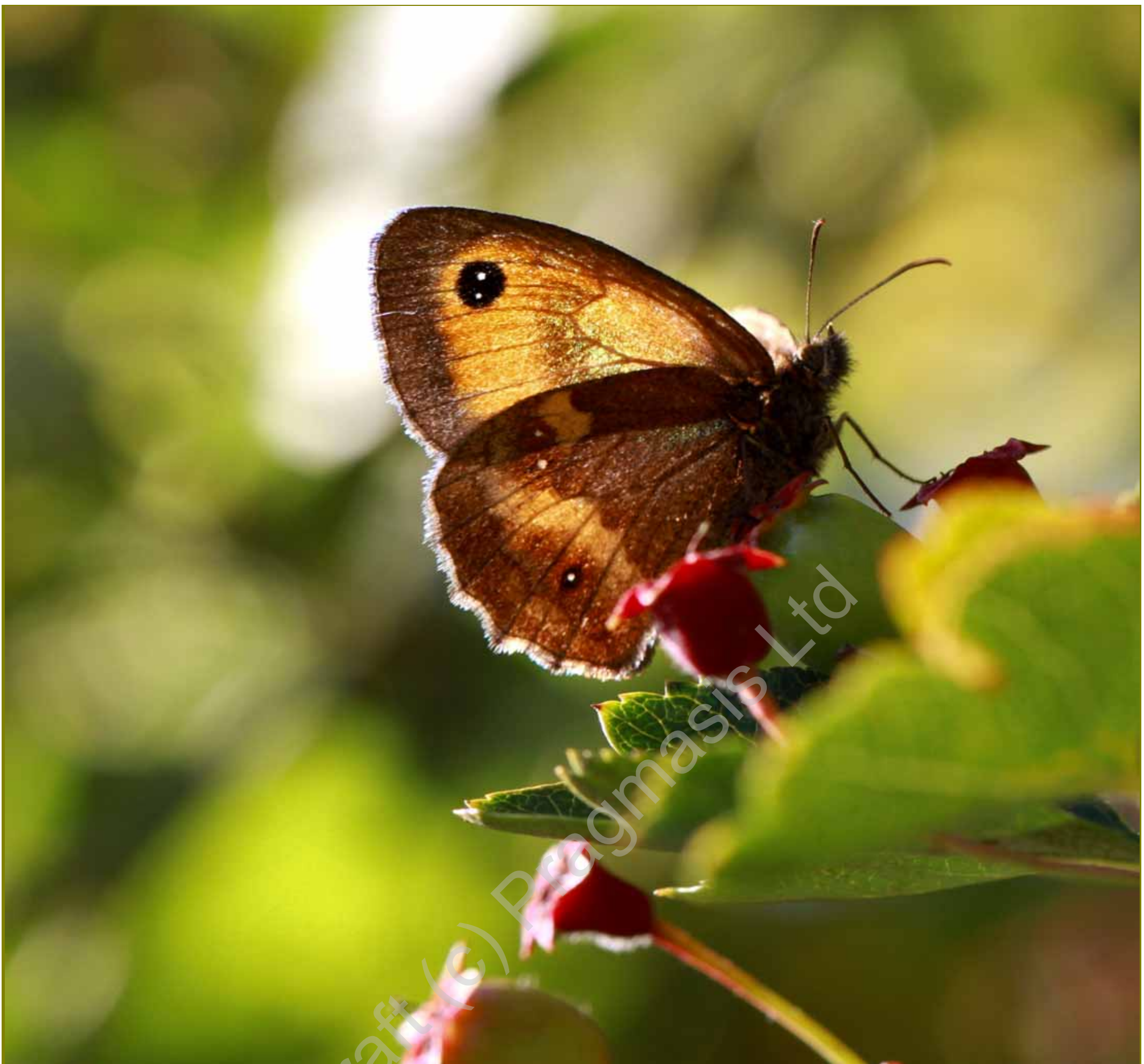
July 2012

Monday	Tuesday	Wednesday	Thursday	Friday	Saturday	Sunday
						1
2	3	4	5	6	7	8
9	10	11	12	13	14	15
16	17	18	19	20	21	22
23	24	25	26	27	28	29
30	31					

Alvecote Wood

Alvecote Wood is 20 acres of ancient and newly-planted woodland near Tamworth that is being developed as a site for wildlife and for use by community groups. It consists of 11 acres of ancient woodland and a new 9 acre site, Betty's Wood. The whole site contains ponds, meadows, hedgerows and other wildlife habitats. This calendar has been produced to help support our work. For more information, please see www.alvecotewood.co.uk. Photography by Sarah Walters (c) Pragmasis Ltd.





Gatekeeper at Alvecote Wood

Alvecote wood is home to many species of woodland butterfly including the gatekeeper, ringlet, speckled wood and purple hairstreak

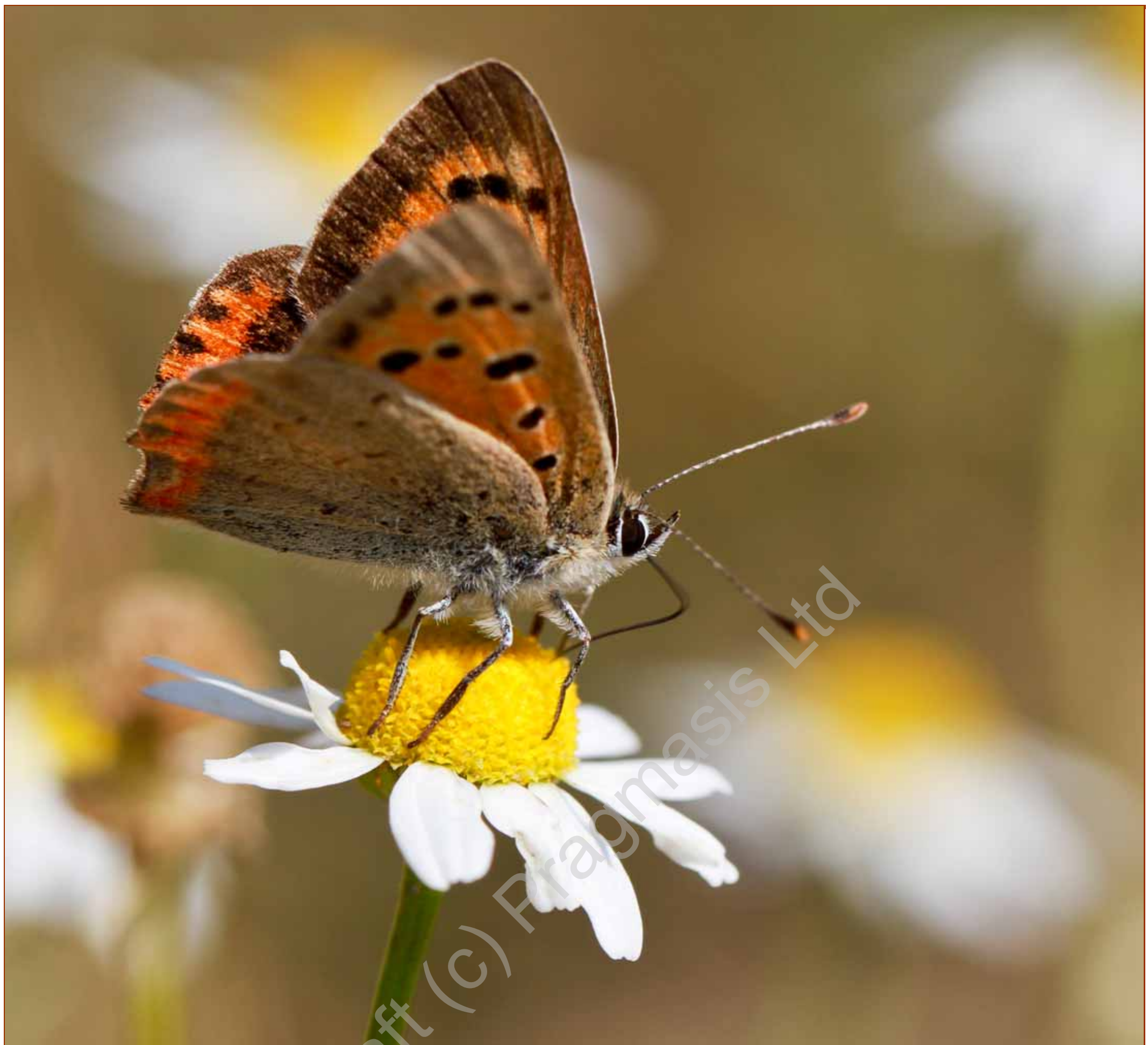
August 2012

Monday	Tuesday	Wednesday	Thursday	Friday	Saturday	Sunday
		1	2	3	4	5
6	7	8	9	10	11	12
13	14	15	16	17	18	19
20	21	22	23	24	25	26
Bank Holiday 27	28	29	30	31		

Alvecote Wood

Alvecote Wood is 20 acres of ancient and newly-planted woodland near Tamworth that is being developed as a site for wildlife and for use by community groups. It consists of 11 acres of ancient woodland and a new 9 acre site, Betty's Wood. The whole site contains ponds, meadows, hedgerows and other wildlife habitats. This calendar has been produced to help support our work. For more information, please see www.alvecotewood.co.uk. Photography by Sarah Walters (c) Pragmasis Ltd.





Small Copper in Betty's Wood

Betty's Wood meadow is home to an increasing range of grassland butterflies including this delicate small copper

September 2012

Monday	Tuesday	Wednesday	Thursday	Friday	Saturday	Sunday
					1	2
3	4	5	6	7	8	9
10	11	12	13	14	15	16
17	18	19	20	21	22	23
24	25	26	27	28	29	30

Alvecote Wood

Alvecote Wood is 20 acres of ancient and newly-planted woodland near Tamworth that is being developed as a site for wildlife and for use by community groups. It consists of 11 acres of ancient woodland and a new 9 acre site, Betty's Wood. The whole site contains ponds, meadows, hedgerows and other wildlife habitats. This calendar has been produced to help support our work. For more information, please see www.alvecotewood.co.uk. Photography by Sarah Walters (c) Pragmasis Ltd.





Autumn colour at Alvecote Wood

Gelder rose leaves provide early autumn colour, as Alvecote Wood prepares for the winter. A season of mists and sunsets

October 2012

Monday	Tuesday	Wednesday	Thursday	Friday	Saturday	Sunday
1	2	3	4	5	6	7
8	9	10	11	12	13	14
15	16	17	18	19	20	21
22	23	24	25	26	27	28
29	30	31				

Alvecote Wood

Alvecote Wood is 20 acres of ancient and newly-planted woodland near Tamworth that is being developed as a site for wildlife and for use by community groups. It consists of 11 acres of ancient woodland and a new 9 acre site, Betty's Wood. The whole site contains ponds, meadows, hedgerows and other wildlife habitats. This calendar has been produced to help support our work. For more information, please see www.alvecotewood.co.uk. Photography by Sarah Walters (c) Pragmasis Ltd.





Turning oak leaves at Alvecote Wood



The oak is one of the last trees to change colour, holding on to its leaves until later than other trees. Late autumn and winter herald our season of hard work at Alvecote Wood. Most work has to be done outside the bird nesting season, and when trees are dormant. November heralds the start of winter woodland management

November 2012

Monday	Tuesday	Wednesday	Thursday	Friday	Saturday	Sunday
			1	2	3	4
5	6	7	8	9	10	11
12	13	14	15	16	17	18
19	20	21	22	23	24	25
26	27	28	29	30		

Alvecote Wood

Alvecote Wood is 20 acres of ancient and newly-planted woodland near Tamworth that is being developed as a site for wildlife and for use by community groups. It consists of 11 acres of ancient woodland and a new 9 acre site, Betty's Wood. The whole site contains ponds, meadows, hedgerows and other wildlife habitats. This calendar has been produced to help support our work. For more information, please see www.alvecotewood.co.uk. Photography by Sarah Walters (c) Pragmasis Ltd.





Christmas scenery at Alvecote Wood

Another year has passed at the woods, and we would like to wish you all a Merry Christmas and Happy New Year

December 2012

Monday	Tuesday	Wednesday	Thursday	Friday	Saturday	Sunday
					1	2
3	4	5	6	7	8	9
10	11	12	13	14	15	16
17	18	19	20	21	22	23
24	Christmas Day 25	Boxing Day 26	27	28	29	30
31	January 2013 Bank Holiday	2	3	4	5	6

Alvecote Wood

Alvecote Wood is 20 acres of ancient and newly-planted woodland near Tamworth that is being developed as a site for wildlife and for use by community groups. It consists of 11 acres of ancient woodland and a new 9 acre site, Betty's Wood. The whole site contains ponds, meadows, hedgerows and other wildlife habitats. This calendar has been produced to help support our work. For more information, please see www.alvecotewood.co.uk. Photography by Sarah Walters (c) Pragmasis Ltd.



Draft (c) Pragmasis Ltd

January 2013						
Monday	Tuesday	Wednesday	Thursday	Friday	Saturday	Sunday
						1
Bank Holiday 2	3	4	5	6	7	8
9	10	11	12	13	14	15
16	17	18	19	20	21	22
23	24	25	26	27	28	29
30	31					