

EVENTS SPRING/SUMMER 2014



Schools and Community Groups

We would very much like to welcome Schools, community groups, birdwatchers, artists, photographers and natural history groups to our woods. We have full CEVAS accreditation, and are well placed to undertake all kinds of educational and recreational visits to the woods. If you would like to come to the woods, please contact us. We are also happy to welcome the Scouts and other similar groups for camping and community activities to the woods.

If you would like to bring a group to the woods, please contact us, and we will do our best to help.

ALVECOTE WOOD

78 Castlehall
Tamworth
Staffordshire
B77 2EG

Phone: 01827 286267

Email: info@alvecotewood.co.uk

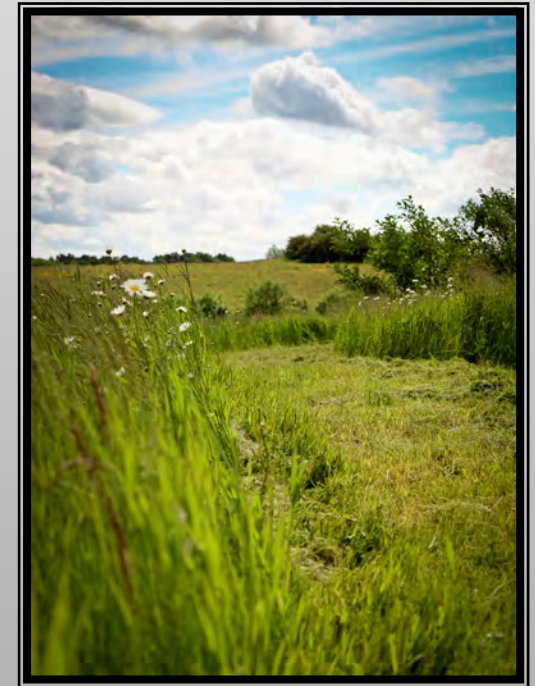
www.alvecotewood.co.uk

Facebook: www.facebook.com/AlvecoteWood

Twitter: [@AlvecoteWood](https://twitter.com/AlvecoteWood)



EVENTS TIMETABLE SPRING/SUMMER 2014



Ancient Woodland for
Wildlife

www.alvecotewood.co.uk

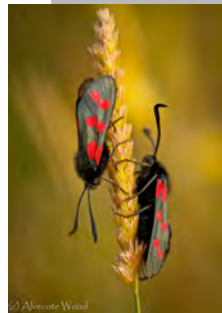
EVENTS PROGRAMME—SPRING/SUMMER 2014

We hold a wide range of events for the public at Alvecote Wood. During the course of the year we will add more events, and some events are dependent upon weather, so please check our web site on www.alvecotewood.co.uk or visit our Facebook page on www.facebook.com/AlvecoteWood, or follow us on Twitter at @AlvecoteWood to get the latest updates.

OPEN DAYS

Open Days are held on the last Sunday in every month and on Bank Holiday Mondays where they follow the last Sunday in a month. You can come along for free, walk around the wood, join a guided tour, learn about what we have been doing at the woods, and visit our small craft shop and information display. Details are on our web site, and up-dates are posted on Facebook and Twitter. We are open from 10am to 4pm. Dates for 2014 are Sundays

30th March
27th April
25th/26th May
29th June
27th July
31st August
28th September



26th October
30th November

OPEN WEDNESDAY EVENINGS

The woods are open to enjoy the bluebells, bird-watching or just stroll around enjoying the countryside. **Wednesday evenings** from 6pm to 8pm, from **16th April to 10th September**, light permitting.

PHOTOGRAPHY COURSES

Sarah runs photography courses at Alvecote Wood suitable for all levels of experience. Sarah studied a professional photography course for 2 years, and has had work published in The Guardian and featured on BBC Springwatch and Autumnwatch

Introduction to Photography

These workshops run all day from 9am to 5pm and introduce beginners and intermediate photographers to the principles of composition, as well as the technical aspects of photography, helping you get the most from your camera in the beautiful woodland setting. Cost is £20 per person, including drinks but excluding lunch.

Dates: Saturdays 17th May, 21st June, 19th



**July, 16th August, 13th September,
11th October**

Insects, Flowers and Macro

Do you want to get great pictures of butterflies, dragonflies, wild-flowers and other wildlife? This course covers all you need to know about equipment, techniques and fieldcraft. It which runs all day from 9am to 5pm. Cost £20 per person, including drinks but excluding lunch.

Dates: 20th July, 17th August, 14th September

To book your place on photography workshops please email sarah@pragmasis.com or phone 01827 286267

WORK PARTIES

We will be holding work parties around the woods from late October onwards. Jobs will include coppicing, moving and stacking brash piles, preparing ground for planting and planting young trees and other woodland maintenance tasks. If you are interested in helping us, please contact us and we will let you know when there are work parties taking place. You can also find out about this via our Facebook page and Twitter feed.